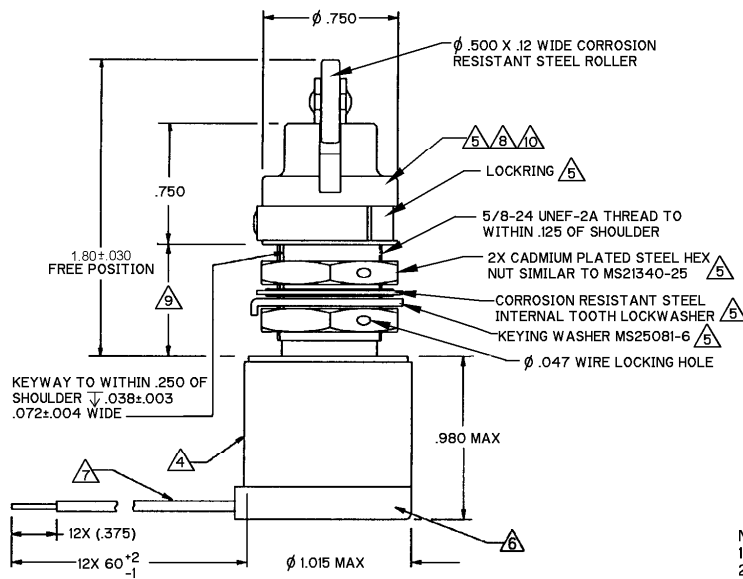
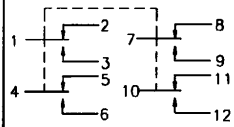


MICRO SWITCH
a Honeywell Division

SWITCH - ENCLOSED

CATALOG LISTING
ML-1275

CIRCUIT DIAGRAM



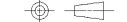
NOTES

- 1 - COINCIDENCE OF OPERATION AND RELEASE POINTS: .010 OF PLUNGER TRAVEL
- 2 - CORROSION RESISTANT STEEL ENCLOSURE, ROLLER AND ROLLER GUIDE
- 3 - SWITCH SEALED PER MIL-PRF-8805 SYMBOL 4
- 4 - PRINT CIRCUIT DIAGRAM, CATALOG LISTING, AND DATE CODE ON NAMEPLATE
- 5 - HARDWARE MAY BE PACKAGED UNASSEMBLED PER MIL-PRF-8805
- 6 - PLASTIC MATERIAL(S) CONFORM TO MIL-M-14 OR MIL-M-24519
- 7 - 12X NUMBER 20 WIRE LEAD PER BMS-13-16 TYPE 1 CLASS 1 MARKED WITH CIRCUIT IDENTIFICATION AND WIRE GAGE (1-20, 2-20, ETC.) PER MIL-W-5088.
- 8 - WIRE ENDS ARE SOLDER DIPPED
- 9 - TO ADJUST ROLLER DIRECTION, REMOVE LOCKRING, SCREW GUIDE DOWN AS FAR AS POSSIBLE, THEN UNSCREW GUIDE TO DESIRED LOCATION IN 45° INCREMENTS. REPLACE LOCKRING
- 10 - ROLLER CAN BE ADJUSTED TO EACH POSSIBLE DIRECTION WITH A ROLLER GUIDE LOCATION OF .657±.030 AND MAINTAIN .250 MIN OVERTRAVEL
- 11 - ROLLER GUIDE MAY BE LOCKED IN 45° AZIMUTH INCREMENTS; MAY BE UNSCREWED AND REMOVED FROM BUSHING TO AID IN INSTALLATION

ANSI Y14.5M-1982 APPLIES

THIS DRAWING COVERS A PROPRIETARY ITEM AND IS THE PROPERTY OF MICRO SWITCH, A DIVISION OF HONEYWELL. THIS DRAWING IS NOT TO BE COPIED OR USED WITHOUT THE APPROVAL OF MICRO SWITCH

THIRD ANGLE PROJECTION



DO NOT SCALE PRINT

SCALE 2:1

UNLESS OTHERWISE SPECIFIED TOLERANCES ARE

ONE PLACE (.01) ±.030

TWO PLACE (.00) ±.015

THREE PLACE (.000) ±.005

ANGLES ± 4°

WEIGHT

CHARACTERISTICS	ELECTRICAL DATA	
OPERATING FORCE - - - - - 6-12 LBS	CONTACT ARRANGEMENT	
FULL OVERTRAVEL FORCE - - - - 30 LBS MAX	4X SPDT	
RELEASE FORCE - - - - - 4 LBS MIN	28 VDC	
PRETRAVEL - - - - - .040 MAX	LOAD (AMPS)	SEA LEVEL 50,000 FT
DIFFERENTIAL TRAVEL - - - .020 MAX	RESISTIVE 7 7	
OVERTRAVEL - - - - - 250 MIN	INDUCTIVE 4 2.5	
	MOTOR 4	

CATALOG LISTING
ML-1275
 ISSUE 2
 M
 REVISIONS
 A 0017880
 21 DEC 05
 CHECK VA
 27 SEP 99
 CHECK S A V
 27 SEP 99
 C S L
 DRAWN
 RASTER